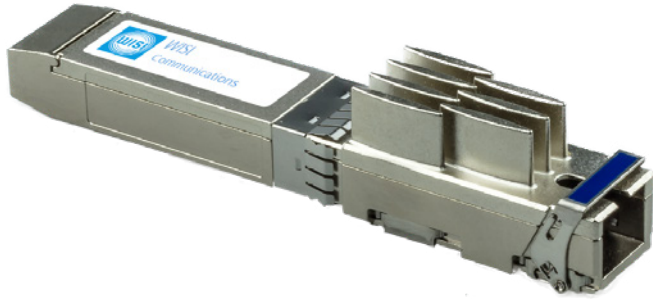


WISI LO10 L 001C

10G PON Carrier SFP+ pluggable module, C-temp



At a glance:

- SFP+ 10G Optical Transceiver with embedded Ethernet-to-PON MAC Bridge
- Software Configurable, Symmetric 10G/10G Rates
- XGS-PON Mode: ITU-T G.9807.1 compliant
- EPON Mode: IEEE802.3av, SIEPON, DPoE and PON AES compliant
- IEEE 802.1AE MACSec uplink encryption
- In-Band Management via Ethernet OAM (IEEE 802.3 Clause 57)
- Up to 128 subscriber and 2K services per OLT
- IEEE 1588v2 & SyncE Timing & Sync Support
- XGS Class N2/EPON PR30+ Optical Power Budget
- RoHS 6 compliant

Description

This universal ITU-T XGS-PON or IEEE 10G EPON hot-pluggable SFP+ Optical Transceiver provides a built-in 10G Ethernet-to-PON MAC bridge. It uses 10G CGS/EPON optics to enable 10G PON solutions at a fraction of the costs of fixed-format OLT chassis. This 10G OLT plugs into any commercially-available Ethernet port of any switch or networking equipment with SFP+ sockets, enabling them to become part of any 10G PON network. The modularity and remote management capabilities of this SFP+ OLT suits them ideally for virtualized PON solutions and Software Defined Network (SDN) implementations. This OLT enables service provider to quickly deploy high-bandwidth services in the most agile, elastic and scalable way. The space and power requirements are far less as any other OLT product on the market, including very high capacity deployments.

Technical data

Transmitter	
Laser type	CW cooled EML DFB
Maximum Reach	> 20 km
Operating wavelength	1577 nm (1575...1580 nm)
Average Launch Power	4...7 dBm
Receiver	
Sensitivity	-7...-28 dBm
Operating wavelength	1270 nm (1260...1280 nm)
Connectors	
Optical PON Interface	SC/UPC
General data	
Operating Case Temperature	0...+70 °C
Storage temperature	-40...+85 °C
Relative Humidity - Operating	5...80 %
Relative Humidity - Storage	0...95 %

Packaging data

Sales unit	1 pcs.
Dimensions (WxHxD) sales unit	13,9 x 17,6 x 80,65 mm
EAN	4010056763640
Article number	76364
Customs tariff number	85176200

Features:

- Hot-Pluggable SFP+ footprint
- Supports symmetric rates: 9.95G/9.95G (XGS); 10.3G/10.3G (10G EPON)
- Supports 500 AllocIDs/T-CONTs (XGS); 1000 LLIDs (10G EPON)
- Compliant with ITU-T G.9807.1 and G.988 specifications (XGS-PON)
- Compliant with IEEE 802.3av, IEEE1904.1, and DPoE specifications (10G EPON)
- IEEE AES encryption on PON side
- Supports IEEE802.1ae MacSec uplink encryption
- Supports Phase/ToD transport: IEEE 1588v2 (XGS); IEEE 802.1as-to-IEEE 1588v2 (10G EPON)
- Supports Synchronous Ethernet
- Jumbo frames: 9.6KB (XGS); 12.5KB (10G EPON)
- 8M Byte of internal packet buffer memory with configurable priority queues
- Class N2(XGS)/PR30+(10G EPON) optical power budget: • 1577nm cooled EML DFB laser, • 1270nm APD/TIA burst receiver
- Integrated Digital Diagnostics and Monitoring (SFF-8472) over Two-Wire interface
- Digital Receive Signal Strength Indicator (RSSI)
- Single fiber SC/UPC receptacle
- SFI local interface
- Enhanced jitter performance
- Commercial or Enhanced case temperature

Applications:

- PON OLT Connectivity for Ethernet switches
- Outside Plant PON access bridge connectivity
- Wireless Backhaul
- High-Bandwidth business PON connectivity
- Port-by-port expansion of existing switches
- MDU-located PON bridge
- High-Density PON aggregation
- Data Center PON